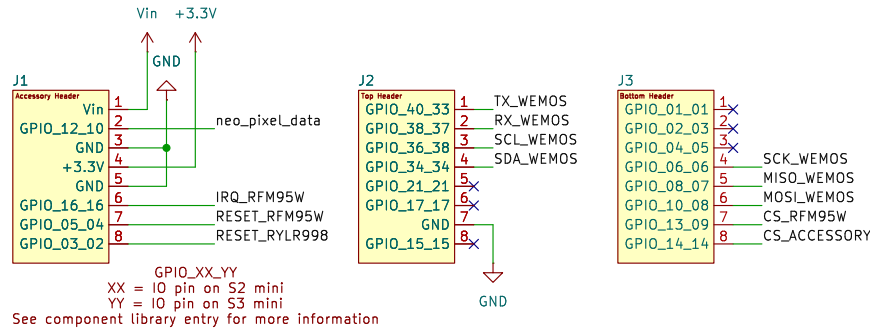
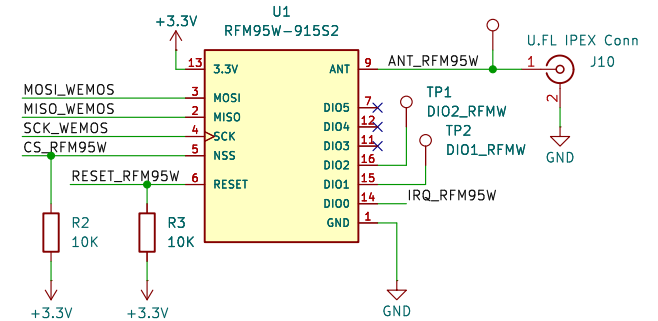


Nugget Connection

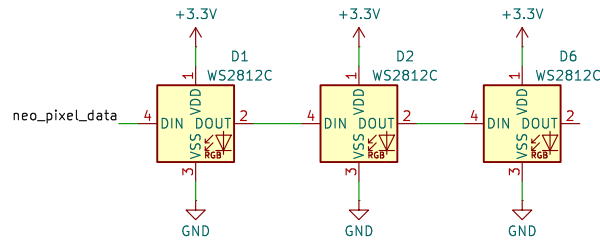


RFM95W Module

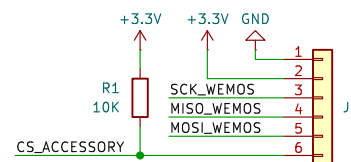
RFM95's RESET (ESP GPIO5) must be pulled HIGH in order for the RFM to work properly (this can be done either in hardware or software)



NEOPIXELS

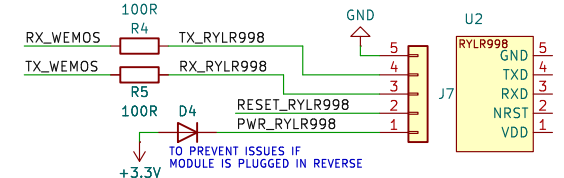


SPI OUT TO ACCESSORY



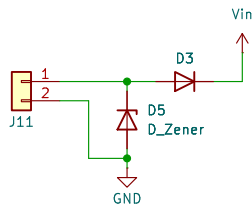
RYLR998 Module

Note:
The RYL9 is hungry, transmit mode current can be 140mA!
RESET has an internal pullup on the RYL998 and therefore does not need one on the pcb
RYLR998 module is only visible on the BOM, not on the board
Connector is used to connect the RYL998 module to the PCBA

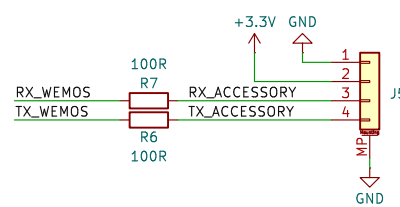


OFF BOARD PWR INPUT

6V max
4.8V min to get 3.3V rail stable

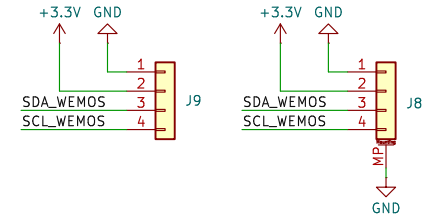


UART OUT TO ACCESSORY



I2C OUT TO ACCESSORY

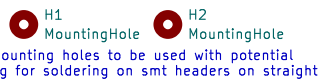
BASED ON SPARKFUN QWIC CONNECT SYSTEM
<https://www.sparkfun.com/qwic>



TOP SIDE FIDUCIALS



BOTTOM SIDE FIDUCIALS



0xjberan
Retia, LLC

Sheet: /
File: lora_paw_v2.kicad_sch

Title: Nugget LoRa Addon Board

Size: A4 Date: 2024-03-19

KiCad E.D.A. 8.0.1

Rev: v2.0

Id: 1/1